

NEW RELEASE

WRX Supaloy Arms including Anti-Lift

New SuperPro Roll Control WRX Supaloy Front Lower Control Arms increase the handling of your WRX to better than that of the STI. The arms are built with SuperPro Anti-Lift and increased caster ability and featuring the new "Grip Dynamics" system which combined improves grip for better handling and performance outcomes.

- Alloy light-weight and stronger than original steel – **less unsprung weight.**
- SuperPro Anti-Lift Kit included with arm.
- Anti-Lift dialled into rear bushing.
- SuperPro bushings for increased tyre contact patch control, minimal NVH with maximum service life – **better handling without a rough ride.**
- Suitable for road and track.

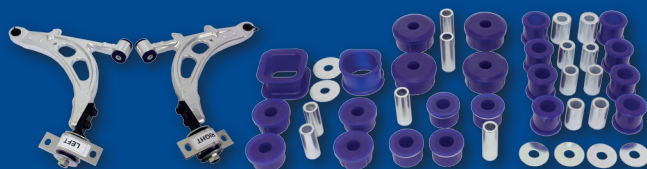


ALOY0004K

Now our popular Complete Vehicle Enhancement Kits come with the Alloy Arms. NEW KITS NOW AVAILABLE.



GC (WRX)
KIT134AK
Master Kit



GD (WRX)
10/00 - 09/02
KIT119AK
Master Kit



GDB (WRX)
10/02 - 07
KIT120AK
Master Kit



www.superpro.com.au